

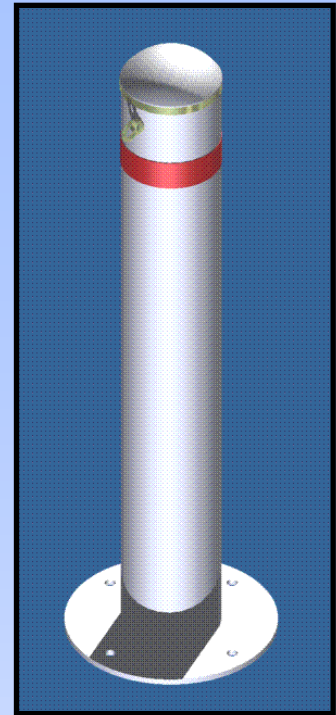
Surface Mount Bollards

Permanent (Fixed) Type

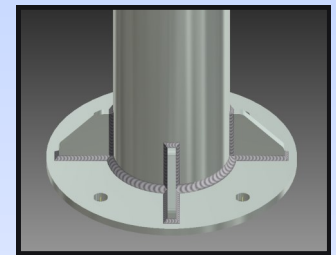
Surface mount fixed bollards are used in applications where the floor or pavement can not be penetrated by core drilling or cutting, and the bollard does not need to be removed after installation.

Product Features:

- Heavy Duty 5mm wall section for added impact resistance.
- Reflective red band for night-time visibility.
- No slab penetration or core drilling required.
- Fully Zinc Plated for superior corrosion protection.
- OPTIONAL powdercoat to customer order.
- OPTIONAL chain eyes available to order.
- OPTIONAL gussets available to order for additional strength.



Optional chain eyes shown



Optional Gussets available

Specifications	114mm Type	140mm Type	165mm Type
Product Description	Surface mount fixed bollard		
Corrosion Protection	Electrolytic zinc after welding		
Decorative Finish	Optional powdercoat to customer order		
Material	5mm thick steel Post		
Base Plate Dimensions	Ø250mm x 8mm	Ø300mm x 10mm	Ø350mm x 10mm
Height	950mm*	950mm*	950mm*
Fixings (Not Included)	4 x M12 Chemi-Anchor	4 x M16 Chemi-anchor	4 x M16 Chemi-anchor
Weight	16 Kg	19 Kg	25 Kg
Order Part Number	25-20-40	25-20-50	25-20-60

* Heights from 950mm to 1200mm (including cap) are available to customer order—please discuss customised height and gusseting requirements with our sales representative at time of order placement.

CONTACT:

Phone: (08) 6305 0511
 Fax: (08) 9246 9963
 Email: ask-us@accesstechnologies.com.au
 Web: www.accesstechnologies.com.au

